



## Rabbit anti TGF beta Polyclonal Antibody

Alternative Name(s): transforming growth factor, beta ; TGFB; CED; LAP; DPD1; IBDMDE; TGFbeta; TGF-beta1

### Order Information

- **Description:** TGF beta
- **Catalogue:** 500-3944
- **Lot:** See label
- **Size:** 100ug/200ul
- **Host:** Rabbit
- **Clone:** nan
- **Application:** IHC(P), WB, ELISA
- **Reactivity:** Hu, Ms, Rt

### **ANTIGEN PREPARATION**

A synthetic peptide derived from N-terminus of human TGF-beta protein.

### **BACKGROUND**

TGF beta is a secreted ligand of the TGF-beta (transforming growth factor-beta) superfamily of proteins. Ligands of this family bind various TGF-beta receptors leading to recruitment and activation of SMAD family transcription factors that regulate gene expression. TGFβs mediate many cell-cell interactions that occur during embryonic development. Three TGFβs have been identified in mammals. TGFβ1, TGFβ2 and TGFβ3 are each synthesized as precursor proteins that are very similar in that each is cleaved to yield a 112 amino acid polypeptide that remains associated with the latent portion of the molecules. Biologically active TGFβ requires dimerization of the monomers (usually homodimers) and release of the latent peptide portion. Overall, the mature region of the TGFβ3 protein has approximately 80% identity to the mature region of both TGFβ1 and TGFβ2. However, the NH2 terminals or precursor regions of their molecules share only 27% sequence identity.

### **PURIFICATION**

The Rabbit IgG is purified by Epitope Affinity Purification

### **FORMULATION**

This affinity purified antibody is supplied in sterile Phosphatebuffered saline (pH7.2) containing antibody stabilizer

### **SPECIFICITY**

This antibody recognizes ~13 kDa of TGF-beta. It reacts with human, rat and mouse. The other species are not tested.

### **STORAGE**

The antibodies are stable for 24 months from date of receipt when stored at -20oC to -70oC. The antibodies can be stored at 2oC-8oC for three month without detectable loss of activity. Avoid repeated freezing-thawing cycles.

### **APPLICATIONS/SUGGESTED WORKING DILUTIONS\***

- Western Blot: 0.1-1 µg/ml
- ELISA: 0.01-0.1 µg/ml
- Immunoprecipitation: 2-5 µg/ml
- IHC: 2-10 µg/ml
- Flow cytometry: Not tested
- Molecular Weight: 13.0
- Positive Control: Kidney Tissue
- Cellular Location: Cell Membrane

### **FOR RESEARCH USE ONLY.**

AbboMax, Inc 2528 Qume Drive, Suite 8, San Jose, California 95131, USA  
1 408-573-1898 (Tel). 1 408-573-1858 (Fax). [www.abbomax.com](http://www.abbomax.com) [info@abbomax.com](mailto:info@abbomax.com)

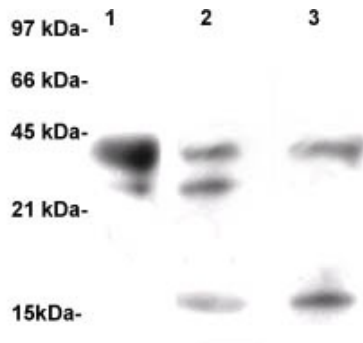


\*Optimal dilutions should be determined by researchers for the specific applications.

**FOR RESEARCH USE ONLY.**

AbboMax, Inc 2528 Qume Drive, Suite 8, San Jose, California 95131, USA  
1 408-573-1898 (Tel). 1 408-573-1858 (Fax). [www.abbomax.com](http://www.abbomax.com) [info@abbomax.com](mailto:info@abbomax.com)

## DATA ATTACHMENTS



Western Blot: The samples derived from recombinant protein TGF-beta-GST (lane 1), MCF-7 (lane 2), mouse placenta tissue lysate (lane 3) were immunoprobed by Rabbit anti-TGF-beta (Cat#500-3944) at 1:500. An immunoreactive band is observed around ~40kDa (recombinant protein +GST) and 14kDa.



Immunohistochemistry: Human placenta (FFPE) stained with Anti-TGF-beta antibody (Cat# 500-3944) at 1:100 for 10 min @ RT. Staining of formalin-fixed tissue requires boiling tissue sections in 10 mM Citrate Buffer, pH 6.0 for 10 min followed by cooling at RT for 20 min.

## REFERENCES

### FOR RESEARCH USE ONLY.